

M P you G

- **WebnLearn: Creating your EPM Deployment Plan**

10 January 2012

● Meeting and Live Meeting Settings

F5: Will bring you into the full screen mode. By pressing F5 again you will reduce to the image on your screen.

Q&A tab: Questions – if you have questions during the webcast, use the Q&A tab to submit questions. Questions will be addressed at the end of the webcast.

Recording: This webcast is being recorded and posted on www.MPUG.com within 2 days.

PDU: At the end of the webcast you will get the instructions for claiming your **1.5 PDUs.**

Follow-up: Any follow-up can be directed to info@mpug.com

Event Survey: Please provide comments/suggestions - www.mpug.com/survey



Thank You!

There are no users without you.

● We want to hear from you
today...

Please ask questions and feel free to send us a tip or feedback from today's session.



Upcoming Events

- **WebnLearn India: Seven Basic Steps to Build Realistic Schedule 1/19/2012**
- **WebnLearn: Project Server 2010 – Making Resource Constraint Analysis Work 1/26/2012**
- **WebnLearn: ProjectTalk 1/31/2012**
- **WebnLearn: Tips, Tricks, and Best Practices for Using Microsoft Project 2/16/2012**

Register online at www.mpug.com

PMI PDU credit for this session: [mpugwebnlearn011012](#)

To register PDU credit you must be registered attendee of MPUG for this session and be logged in via Live Meeting



Today's Presenter



Presenter: Chris Vandersluis:

- ❑ President of HMS Software, publishers of TimeControl, timesheet software that has linked to Microsoft Project since 1995
- ❑ Founder of Montreal and Toronto MPUG chapters
- ❑ Published in PM Network, the AMA Project Management Handbook, Fortune, TechNet and www.epmguidance.com

● We all want EPM... don't we?

It seems so desirable...

- Integrated resource capacity planning
- Executive-level real-time dashboards
- Instant decision making
- Improved efficiency
- No more management-by-emergency

● But what does it take?

Yes, a fully integrated and deployed enterprise project management (EPM) system is possible but before you get started have you planned what it will take to go live?

● Common expectations

- It will be ready instantly
- It is all about the technology
- It's just Project Desktop but on the Web
- No one will require training... after all they already know MS Project!
- It will be very inexpensive

● Most common request

“We just bought this Microsoft Project Server product... Can you come make it work?”

Most common response

“What would you like it to do?”

Most common reply

“Don’t you know?”

Common pitfalls

- No project planning for the project planning system
- No requirements or scope established
- It's all about technology – once it's installed, the problem is solved!
- No budget allocated
- No executive sponsor support or too short term

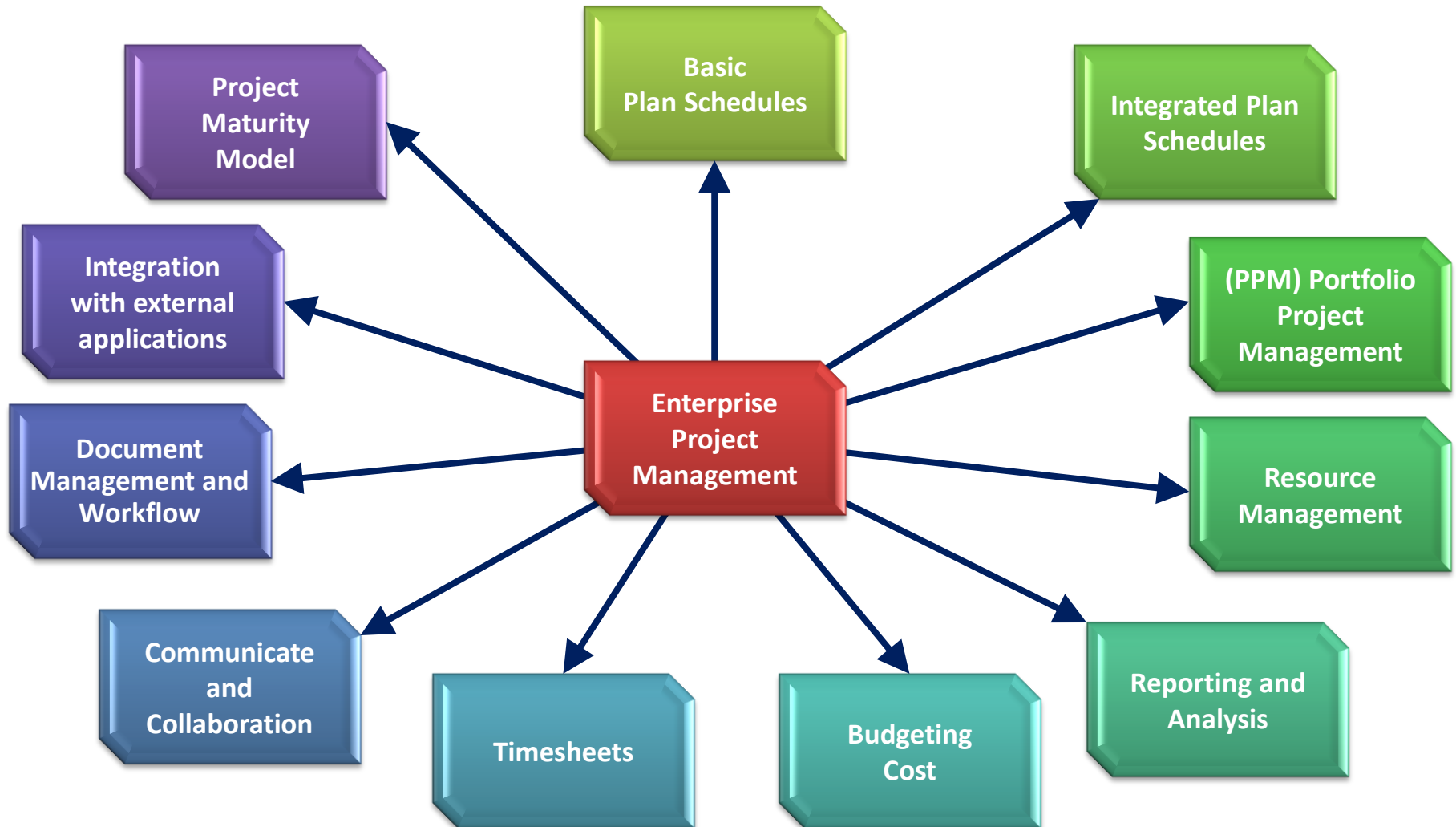
● Establish deployment team

- Identify Key Stakeholders
- Identify internal expertise resources
- Engage external expertise (if required)

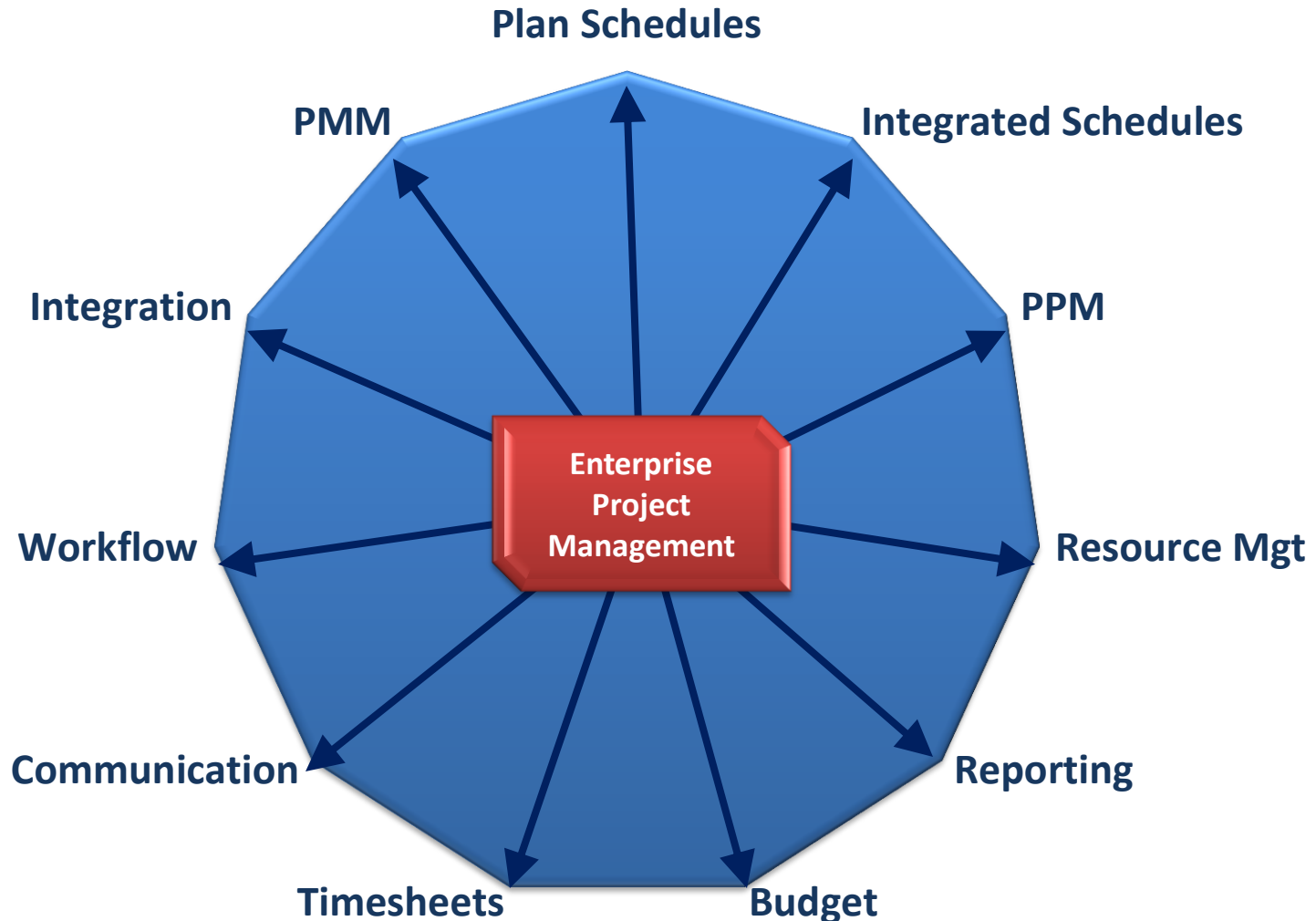
● Identify Business Objectives

- ❑ Executive and Stakeholder workshops
- ❑ Identify management role impact
- ❑ Prioritize business objectives and create a Master Deployment Plan
- ❑ Establish milestones and metrics

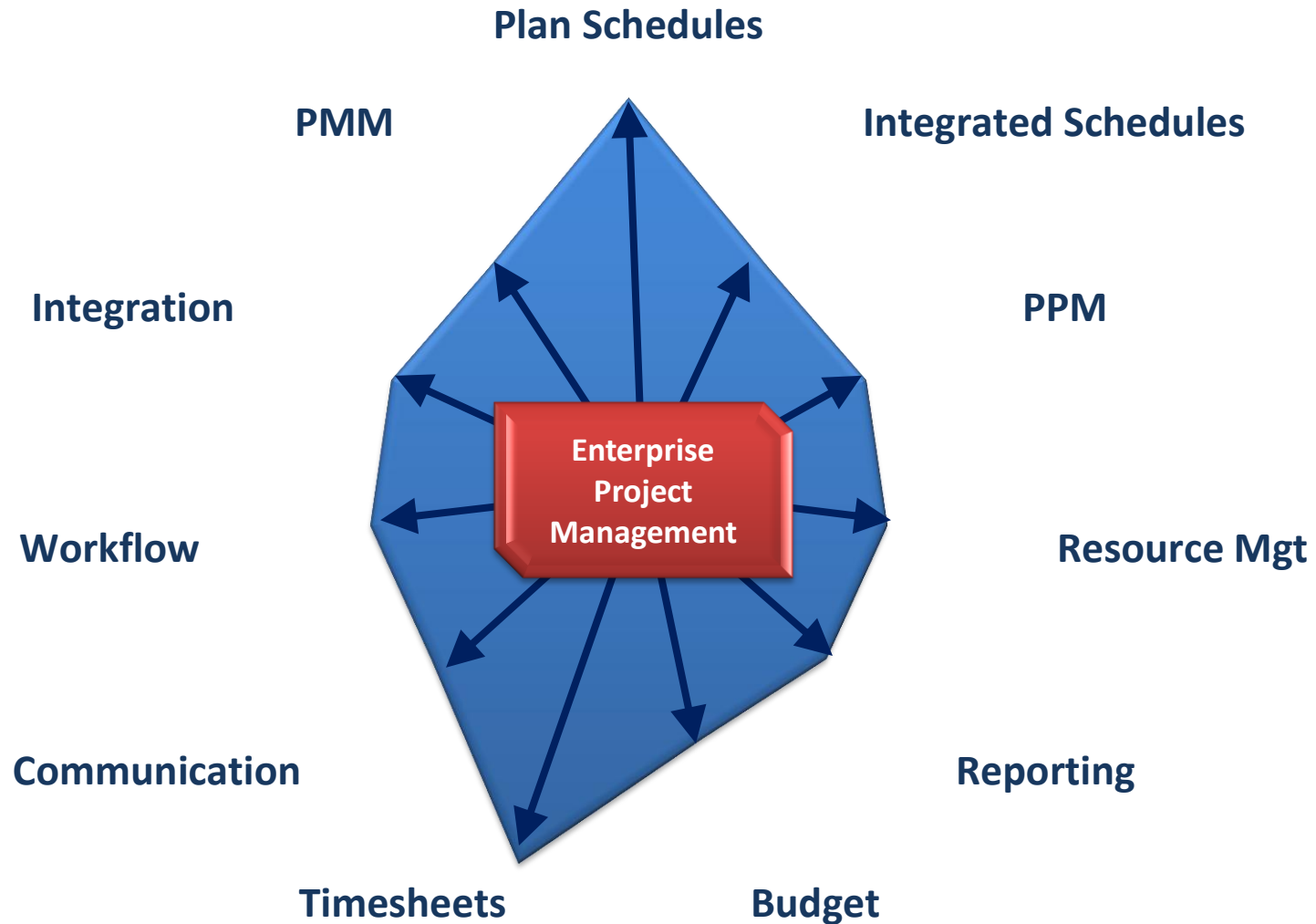
EPM Categories



● The EPM Radar/Vector view



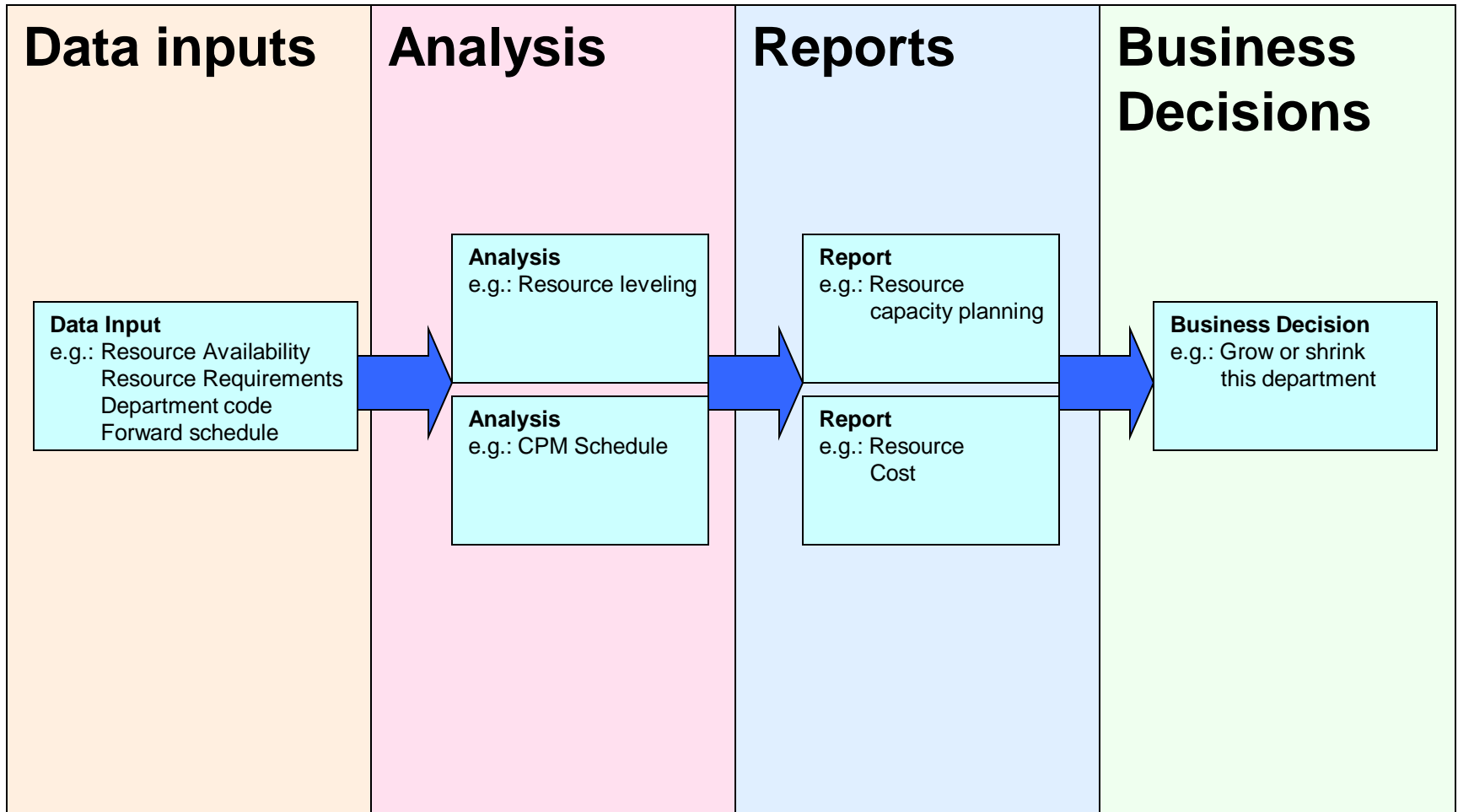
EPM as it evolves



PMBOK knowledge areas



Determining system requirements



● Have all data elements

When talking about resource capacity planning for example, we have to know if we have all the data elements required:

- ❑ 100% of resource availability
- ❑ 100% of resource requirements
- ❑ Skills, departments for *all* resources
- ❑ A *complete* schedule for all work

● Resolve to a business decision

EPM needs ultimately need to resolve to a business need

- If you get that dashboard indicator, what will you do with it?
- If we're making a report, who will read it? What will they do with it?
- If you get that analysis what business decisions will you be able to make?



Phase 1

- Inventory processes
- Adopt, adapt, and design processes
- Evaluate and Select EPM Tools
- Automation Design and configure
- Pilot EPM Tool
- Roll out Phase 1 into production
- Review and Adapt Master Deployment Plan

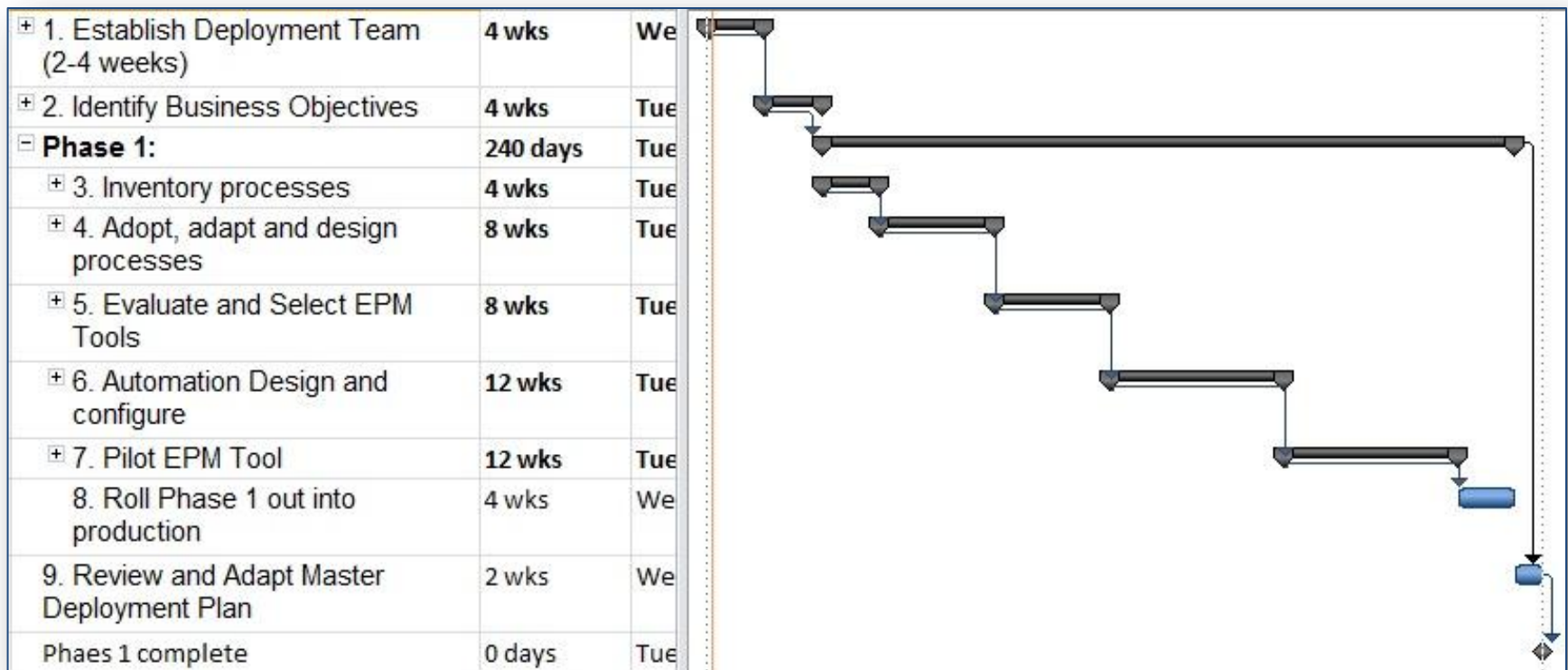


Phase 2

do steps 3 through 9 again

Phase 1 Schedule

That's 48 weeks..., yes, I said 48





Schedule

- Establish Deployment team: 4 weeks
- Identify Business Objectives: 4 weeks
- Phase 1
 - Inventory processes: 4 weeks
 - Adopt, Adapt, design processes: 8 weeks
 - Evaluate/Select EPM tool: 8 weeks
 - Pilot EPM tool: 12 weeks
 - Rollout of Phase 1: 4 weeks
 - Review Phase 1 and adjust Phase 2: 4 weeks

Total: 48 weeks

● How to scope for EPM

Ask your stakeholders:

“What business decisions can you not make now, the making of which could be improved by the implementation of this system?”

● So how to downsize our plan?

Here's one way to decide on what should be in Phase 1:

Ask:

“What minimal configuration could be deployed that would return a positive return on investment ongoingly?”

Not:

“What's the most we can imagine accomplishing?”

Avoid the pitfalls

What we see most often when we're asked to help:

- No charter
- No schedule
- No executive sponsor
- No budget except for software
- No dedicated team
- No success metrics



Next steps

- ❑ Make it a project. You are instituting a change in the underlying infrastructure of your organization, treat it like a corporate project
- ❑ Get a sponsor. Implementing a PMO is impossible without one management support
- ❑ Start identifying practices already in use across the organization



Next steps

- Look at where your data is now being stored. Moving it into a single structure is a good first step to being able to apply standards to it later
- Determine the best practices which should be deployed across the enterprise and;
- Those which could be left to the individual project manager



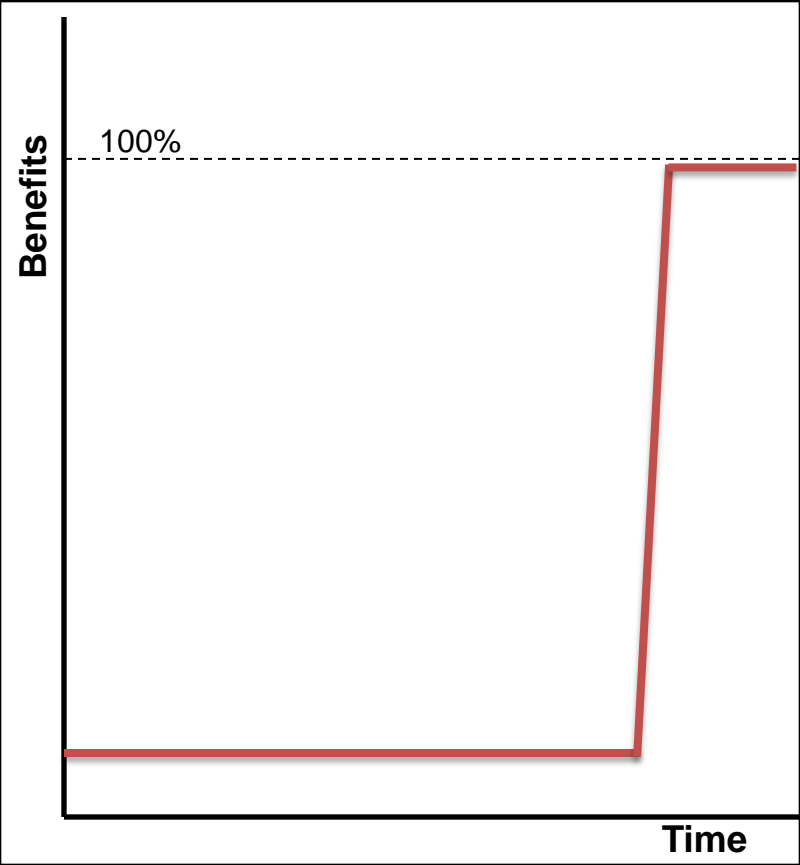
Next steps

- ❑ Start identifying potential team members who are as committed as you are to the PMO process
- ❑ Start looking at where you hurt

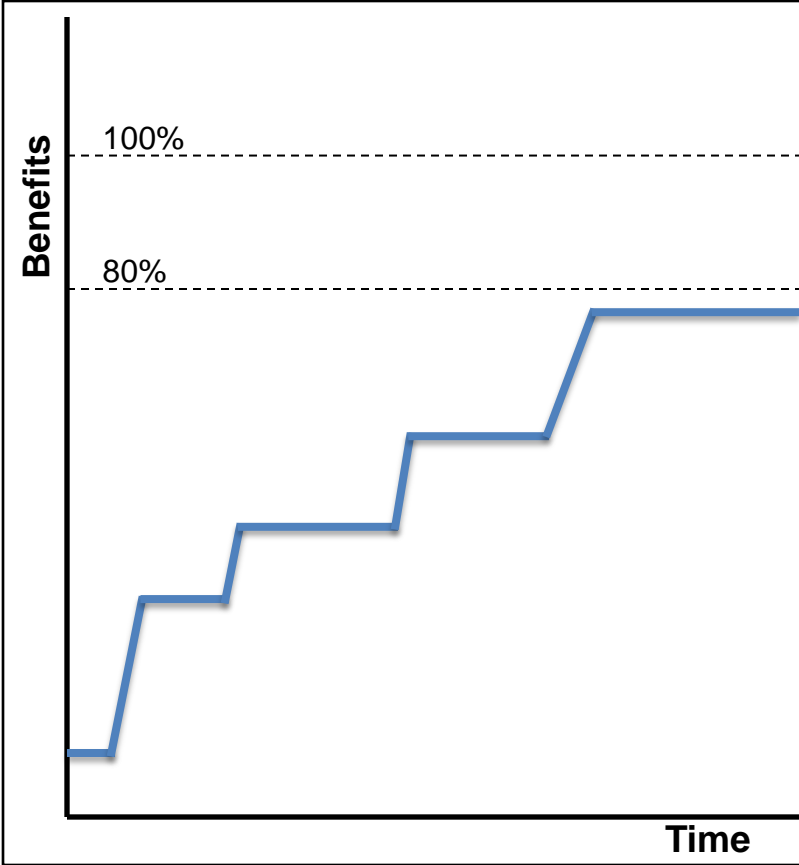
The benefits of implementing a project office will find no support in management unless it's to solve a particular problem
- ❑ Identify potential pitfall areas which should be bypassed during the deployment

Big bang or phased deployment?

Big Bang



Phased



Is it worth it?

If it is.

That's the Zen answer which may seem trite but you have to look for yourself.

- ❑ Some organization will be better off just using Project Desktop and having a more loosely organized project process.
- ❑ Others will be able to use an EPM environment to great benefit. But the cost in effort and time isn't free.

● Details on TechNet

Information on today's topic can be found on Microsoft's TechNet in the Microsoft Project Server area:

<http://technet.microsoft.com/en-us/projectserver/ee263909>

Look in the *From the Trenches* column for “Creating an EPM Deployment Plan”



Thank You!

Questions or comments from today's session?

Email: chris.vandersluis@hms.ca or;

See his blog at: www.epmguidance.com or;

To find out more about TimeControl:

www.timecontrol.com or

To find out more about HMS Software:

www.hmssoftware.ca





Thank You!

Next Steps:

Survey – Help MPUG improve WebnLearns!

www.mpug.com/survey

Recording – The recording for this event will be available within the next 2-3 days on the MPUG website.

PMI PDU credit for this session: [mpugwebnlearn011012](#)

– To register PDU credit you must be registered via MPUG for this session.